



**Noise Monitoring Result**

**Day Time (0700 - 1900hrs on normal weekdays)**

Location: M1a - Footbridge at EX-Wanchai Harbour Road Sports Centre

Date	Time	Weather	Measurement Noise Level			Baseline Level	Construction Noise Level	Limit Level
			Leq	L10	L90	Leq	Leq	Leq
Unit: dB(A), (30-min)								
4/7/19	17:30	Cloudy	70.9	73.5	66.6	72	71	75
12/7/19	09:15	Fine	71.2	74.9	67.5	72	71	75
16/7/19	11:15	Fine	70.2	72.5	65.5	72	70	75
22/7/19	9:45	Fine	72.3	76.0	69.5	72	56	75



**Noise Monitoring Result**

**Day Time (0700 - 1900hrs on normal weekdays)**

Location: M2b - Noon-day gun area

Date	Time	Weather	Measurement Noise Level			Baseline Level	Construction Noise Level	Limit Level
			Leq	L10	L90	Leq	Leq	Leq
Unit: dB(A), (30-min)								
4/7/19	16:20	Cloudy	65.6	67.2	63.2	68	66	75
12/7/19	10:00	Fine	64.6	66.0	62.0	68	65	75
16/7/19	13:00	Fine	65.8	67.5	62.0	68	66	75
22/7/19	10:30	Fine	68.4	70.0	66.5	68	61	75

Location: M3a - Tung Lo Wan Fire Station

Date	Time	Weather	Measurement Noise Level			Baseline Level	Construction Noise Level	Limit Level
			Leq	L10	L90	Leq	Leq	Leq
Unit: dB(A), (30-min)								
4/7/19	13:40	Fine	63.8	65.5	60.1	69	64	75
8/7/19	14:40	Fine	63.1	64.5	61.0	69	63	75
16/7/19	8:50	Fine	64.3	66.0	62.5	69	64	75
25/7/19	14:50	Fine	64.1	65.5	62.0	69	64	75



**Noise Monitoring Result**

**Day Time (0700 - 1900hrs on normal weekdays)**

Location: M4b - Victoria Centre

Date	Time	Weather	Measurement Noise Level			Baseline Noise Level	Construction Noise Level	Limit Level
			Leq	L10	L90	Leq	Leq	Leq
Unit: dB(A), (30min)								
4/7/19	13:00	Fine	69.6	73.5	64.5	67	66	75
8/7/19	15:55	Fine	80.3	82.3	65.0	67	80	75
16/7/19	08:10	Fine	65.8	68.5	62.0	67	66	75
25/7/19	15:30	Fine	66.0	68.3	62.5	67	66	75

Location: M5b - City Garden

Date	Time	Weather	Measurement Noise Level			Baseline Level	Construction Noise Level	Limit Level
			Leq	L10	L90	Leq	Leq	Leq
Unit: dB(A), (30min)								
4/7/19	14:30	Fine	67.7	69.0	66.0	68	68	75
8/7/19	16:30	Fine	68.1	69.0	66.5	68	52	75
16/7/19	09:40	Fine	68.5	71.5	66.0	68	59	75
22/7/19	10:30	Fine	68.1	69.5	66.0	68	52	75

Location: M6 - HK Baptist Church Henrietta Secondary School

Date	Time	Weather	Measurement Noise Level			Baseline Level	Construction Noise Level	Limit Level
			Leq	L10	L90	Leq	Leq	Leq
Unit: dB(A), (30-min)								
4/7/19	15:05	Fine	66.4	67.5	64.5	71	66	70
12/7/19	10:40	Fine	66.4	67.5	64.5	71	66	70
16/7/19	10:15	Fine	67.2	68.5	64.5	71	67	70
22/7/19	11:05	Fine	66.4	67.5	64.5	71	66	70



### Noise Monitoring Result

#### Day Time (0700 - 1900hrs on normal weekdays)

Location: M7e - International Finance Centre (Eastern End of Podium) (Reference Station)

Date	Time	Weather	Measurement Noise Level			Baseline Level	Construction Noise Level	Limit Level
			Leq	L10	L90	Leq	Leq	Leq
Unit: dB(A), (30-min)								
3/7/19	09:35	Cloudy	67.6	69.0	63.5	67	60	N/A
9/7/19	15:05	Cloudy	64.1	65.5	62.0	67	64	N/A
15/7/19	13:55	Fine	66.3	68.0	64.0	67	66	N/A
22/7/19	13:30	Fine	65.0	66.5	62.5	67	65	N/A

Location: M7w - International Finance Centre (Western End of Podium)

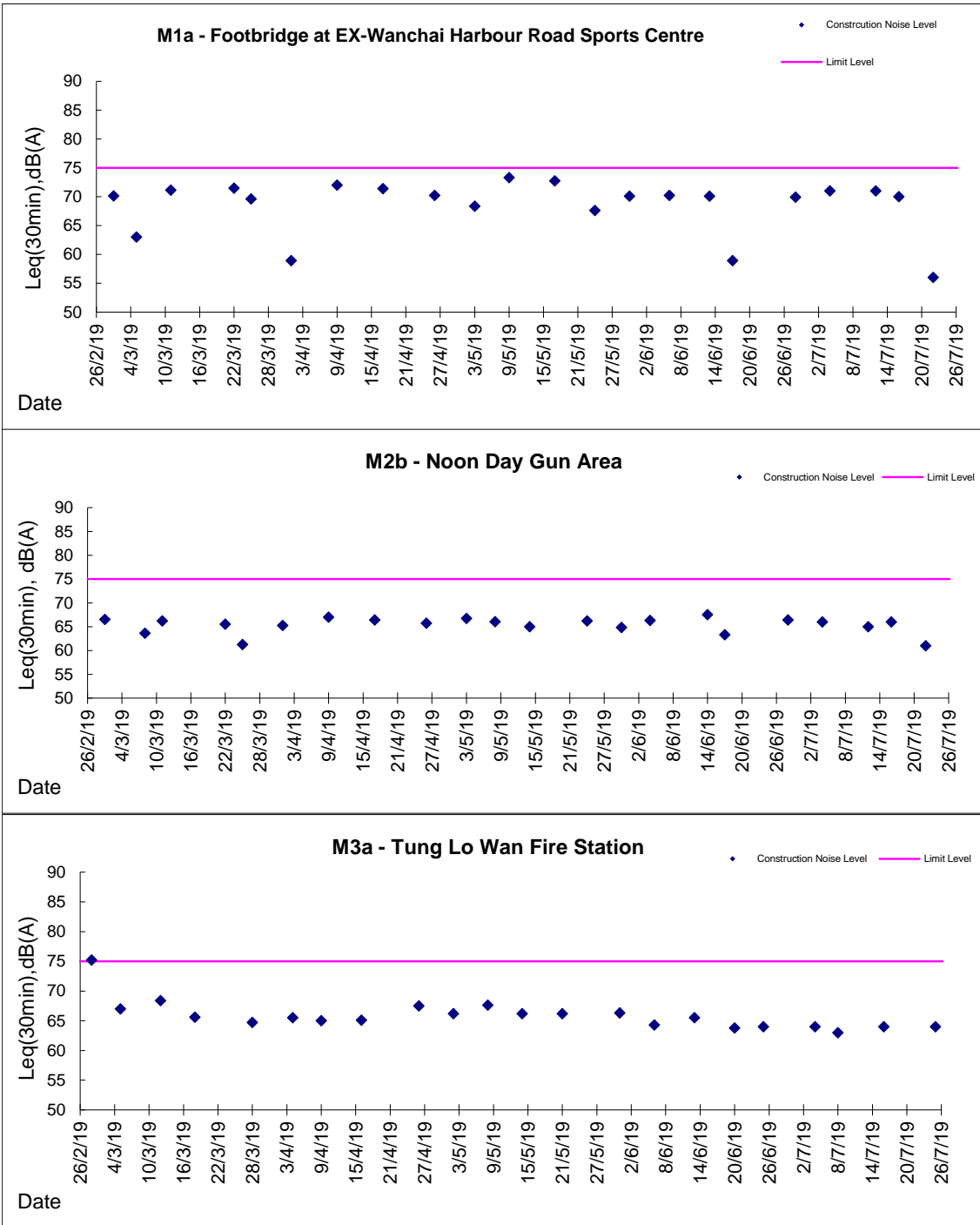
Date	Time	Weather	Measurement Noise Level			Baseline Level	Construction Noise Level	Limit Level
			Leq	L10	L90	Leq	Leq	Leq
Unit: dB(A), (30-min)								
3/7/19	09:00	Cloudy	65.2	67.5	60.0	69	65	75
9/7/19	14:30	Cloudy	68.5	70.5	67.0	69	69	75
15/7/19	13:20	Fine	64.5	67.5	61.0	69	65	75
22/7/19	14:02	Fine	65.0	66.0	61.5	69	65	75

Location: M8 - City Hall

Date	Time	Weather	Measurement Noise Level			Baseline Level	Construction Noise Level	Limit Level
			Leq	L10	L90	Leq	Leq	Leq
Unit: dB(A), (30-min)								
3/7/19	10:30	Cloudy	58.7	60.4	55.5	64	59	70
9/7/19	16:00	Cloudy	58.4	60.5	56.5	64	58	70
15/7/19	14:45	Fine	57.9	59.0	56.0	64	58	70
22/7/19	14:45	Fine	57.1	58.5	55.5	64	57	70

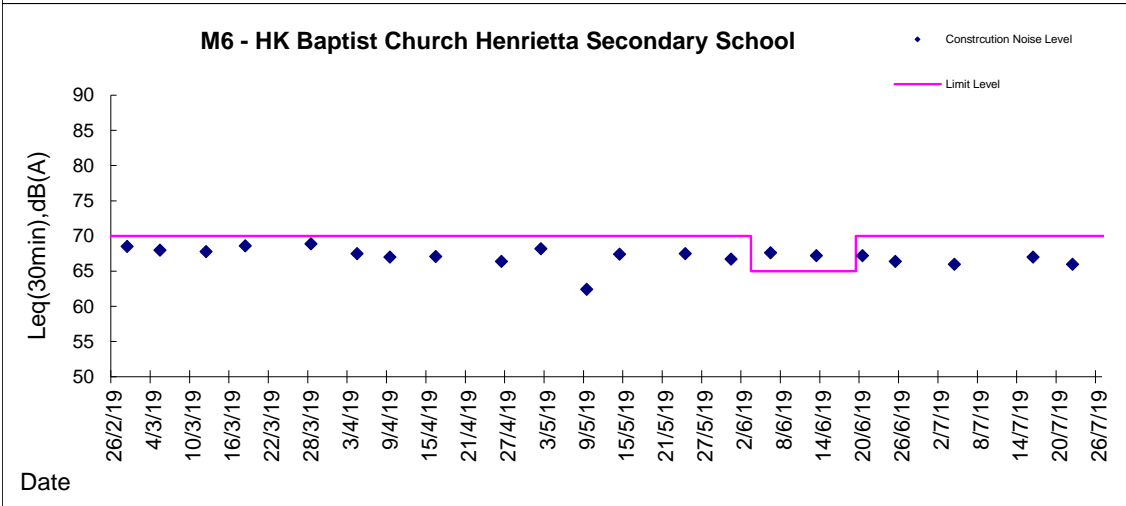
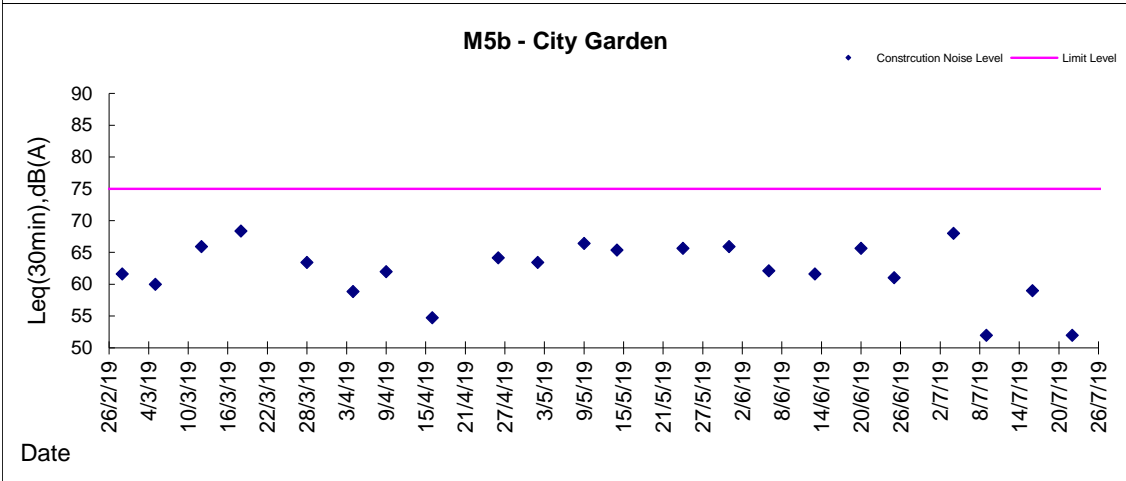
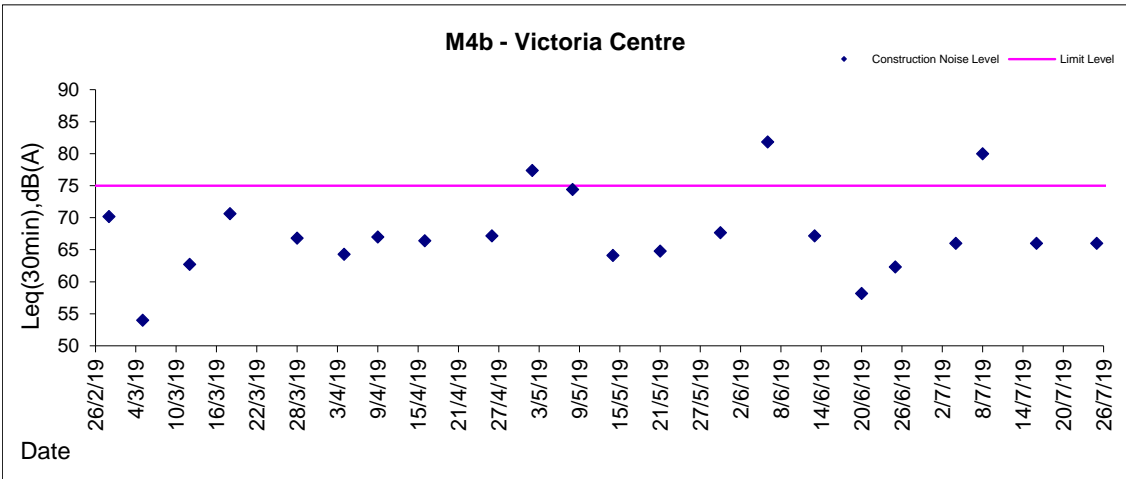


**Graphic Presentation of Noise Monitoring Result**  
**Day Time (0700 - 1900hrs on normal weekdays)**



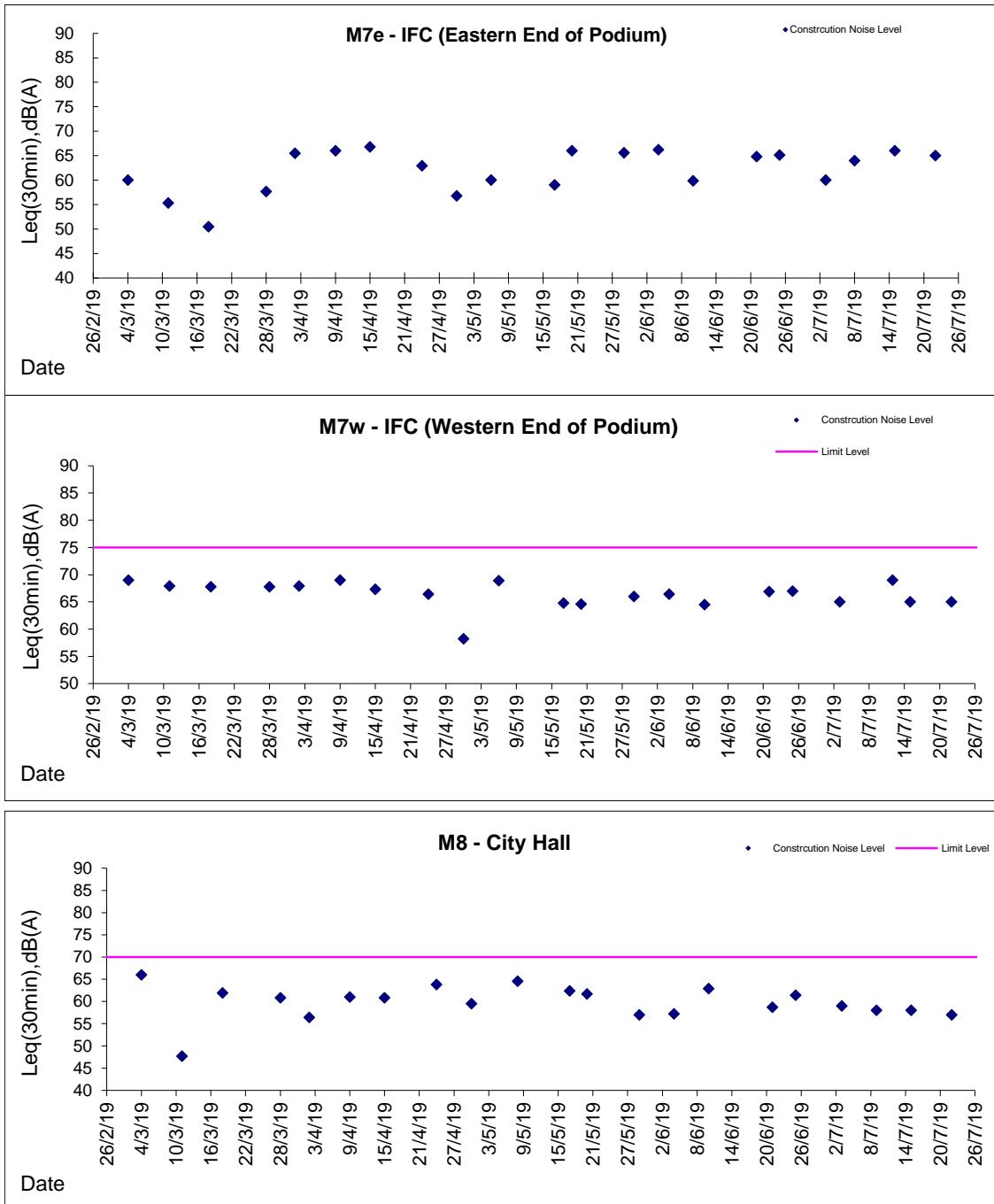


**Graphic Presentation of Noise Monitoring Result**  
**Day Time (0700 - 1900hrs on normal weekdays)**



**Graphic Presentation of Noise Monitoring Result**

**Day Time (0700 - 1900hrs on normal weekdays)**



\* Remark: M7e - IFC (Eastern End of Podium) is a reference monitoring station